

# Parafuso Olhal

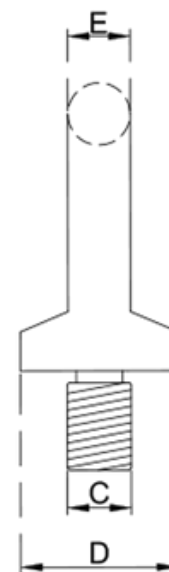
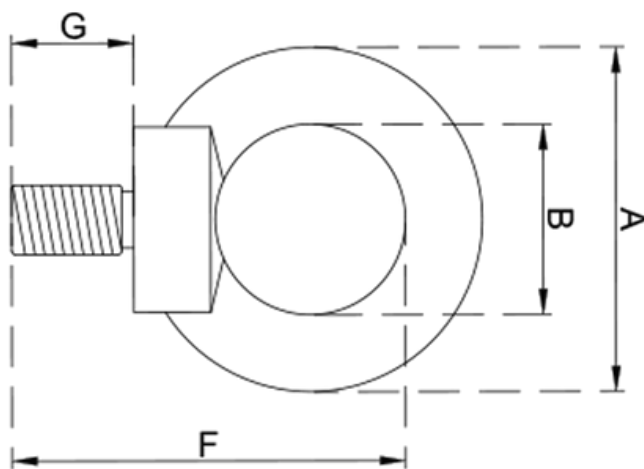
## DIN 580



carga de trabalho  
(Kgf)

kg

DIÂMETRO	ROSCA	A	B	C	D	E	F	G	45°	VERTICAL	PESO
M6	MA - 1,00	36	20	6	20	8	42	13	50	70	0.053
M8	MA - 1,25	36	20	8	20	8	42	13	95	140	0.056
M10	MA - 1,50	45	25	9	25	10	53	18	170	230	0.11
M12	MA - 1,75	53	29	12	30	12	62	21	240	340	0.19
M14	MA - 2,00	63	35	14	36	14	78	26	350	490	0.28
M16	MA - 2,00	63	35	16	36	14	78	26	500	700	0.3
M20	MA - 2,50	72	40	20	40	16	87	32	830	1200	0.47
M22	MA - 2,50	80	44	22	46	21	109	36	1100	1500	0.89
M24	MA - 3,00	90	50	24	50	20	109	36	1270	1800	0.93
M30	MA - 3,50	108	60	30	65	24	132	45	2600	3600	1.73



**FIXOTRAVAS**

DESDE 2005

Peças e Acessórios Industriais